

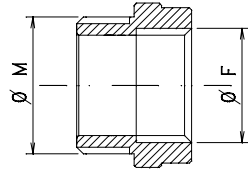
ACCESSOIRES

REDUCTEURS DE FILETAGE M/F

M et F = meme filetage

SERIES

R réducteur



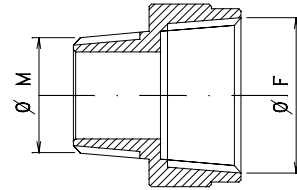
ACCESSORIES

M/F THREAD REDUCERS

M and F same thread

SERIES

R reducer

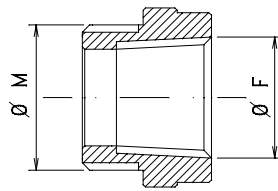


ADAPTATEURS DE FILETAGE M/F

M et F filetage divers.

SERIES

A adaptateur

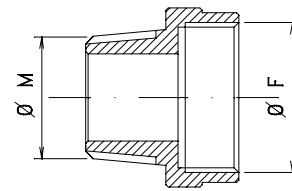


M/F THREAD ADAPTORS

M and F thread different

SERIES

A adaptor

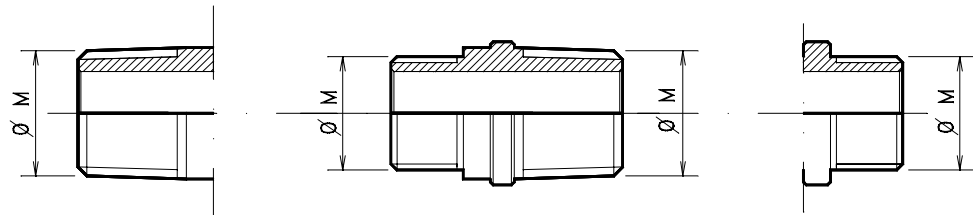


REDUCTEURS/ADAPTATEURS DE FILETAGE M/M

M et M = meme filetage

SERIES

RM reducteurs ou AM adaptateurs



M/M THREAD REDUCERS/ADAPTORS

M and M same thread

SERIES

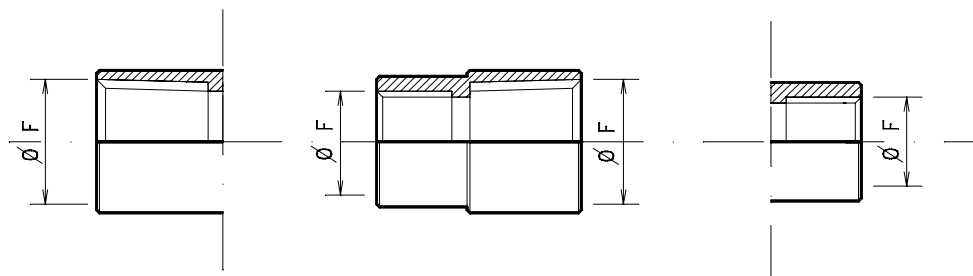
RM reducers or AM adaptor

REDUCTEURS/ADAPTATEURS DE FILETAGE F/F

F et F = meme filetage

SERIES

RF reducteurs ou AF adaptateurs



F/F THREAD REDUCERS/ADAPTORS

F and F same thread

SERIES

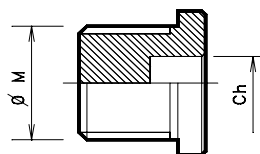
RF reducers or AF adaptor

BOUCHONS

Bouchons mâles des tous les types des filetages, aptes pour les entrées des enveloppes.

SERIES

T bouchon mâle

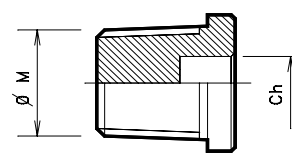


STOPPING PLUGS

Male stopping plugs of all kind of threads, suitable for enclosure entries.

SERIES

T male stopping plug



ACCESSOIRES**ACCESSORIES****DESIGNATION DE FILETAGES**

B BSPP/UNI338 (ISO 7/1 Rp)
U UNI6125 (ISO 7/1 Rc)
N NPT (ANSI B1 20.1)
I ISO Mx1,5 (ISO 261)
P Pg (DIN 40430)

TRHEADS DESIGNATION

B BSPP/UNI338 (ISO 7/1 Rp)
U UNI6125 (ISO 7/1 Rc)
N NPT (ANSI B1 20.1)
I ISO Mx1,5 (ISO 261)
P Pg (DIN 40430)

TABLEAU COMPARATIF DES FILETAGES**THREADS COMPARISON TABLE**

Size > Thread	0	1	2	3	4	5	6	7	8
U		1/2"	3/4"	1"	1 " 1/4	1 " 1/2	2"	2" 1/2	3"
N		1/2"	3/4"	1"	1 " 1/4	1" 1/2	2"	2" 1/2	3"
B	3/8"	1/2"	3/4"	1"	1 " 1/4	1" 1/2	2"	2" 1/2	3"
I	M16	M20	M25	M32	M40	M50	M63	M75	M85
P	Pg11	Pg13,5	Pg16	Pg21	Pg29	Pg36	Pg42	Pg48	

DESIGNATION ET EXEMPLESRéducteurs M/F type **R xa xb**

R = réducteur
x = type du filetage M - **x** = type du filetage F
a = size du filetage M - **b** = size du filetage F

Adaptateurs M/F type **A xa yb**

A = adaptateur réducteur
x = type du filetage M - **y** = type du filetage F
a = size du filetage M - **b** = size du filetage F

Réducteurs M/M type **RM xa xb**

RM = réducteur
x = type du filetage M - **x** = type du filetage M
a = size du filetage M - **b** = size du filetage M

Adaptateurs M/M type **AM xa yb**

AM = adaptateur agrandisseur
x = type du filetage M - **y** = type du filetage M
a = size du filetage M - **b** = size du filetage M

Réducteurs F/F type **RF xa xb**

RF = réducteur
x = type du filetage F - **x** = type du filetage F
a = size du filetage F - **b** = size du filetage F

Adaptateurs F/F type **AF xa yb**

AF = adaptateur agrandisseur
x = type du filetage F - **y** = type du filetage F
a = size du filetage F - **b** = size du filetage F

Bouchons type **Tx a**

T = bouchon
x = type du filetage M
a = size du filetage M

SAMPLES AND DESIGNATIONM/F reducers type **R xa xb**

R = reducer
x = M thread type - **x** = F thread type
a = M thread size - **y** = F thread size

M/F adaptor type **A xa yb**

A = adaptor reducer
x = M thread type - **y** = F thread type
a = M thread size - **b** = F thread size

M/M reducers type **RM xa xb**

RM = reducer
x = M thread type - **x** = M thread type
a = M thread size - **y** = M thread size

M/M adaptor type **AM xa yb**

AM = adaptor enlarger
x = M thread type - **y** = M thread type
a = M thread size - **b** = M thread size

F/F reducers type **RF xa xb**

RF = reducer
x = F thread type - **x** = F thread type
a = F thread size - **b** = F thread size

F/F adaptor type **AF xa yb**

AF = adaptor enlarger
x = F thread type - **y** = F thread type
a = F thread size - **b** = F thread size

Stopping plugs type **Tx a**

T = stopping plug
x = M thread type
a = M thread size

ACCESSOIRES

ECROUS DE FIXATION

Ecrous de fixation pour presse-étoupes, adaptateurs et réducteurs de filetage.

SERIES

LB filetage BSPP/UNI338
LI filetage ISO Mx1,5
LP filetage Pg

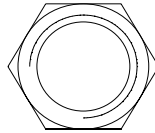
ACCESSORIES

LOCKNUTS

Locknuts for cable glands, thread adaptors and reducers.

SERIES

LB BSPP/UNI338 thread
LI ISO Mx1,5 thread
LP Pg thread



JOINTS D'ETANCHEITE

Joint d'étanchéité en NYLON

SERIES

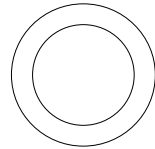
GB pour filetage BSPP/UNI338
GI pour filetage ISO Mx1,5
GP pour filetage Pg

GASKETS

NYLON gaskets

SERIES

GB for BSPP/UNI338 thread
GI for ISO Mx1,5 thread
GP for Pg thread



PLATINES DE TERRE

Platines de mise à terre des presse-étoupes.

SERIES

ETB pour filetage BSPP/UNI338
ETI pour filetage ISO Mx1,5
ETP pour filetage Pg

EARTHING-TAGS

Earthing-tags for cable glands grounding.

SERIES

ETB for BSPP/UNI338 thread
ETI for ISO Mx1,5 thread
ETP for Pg thread

